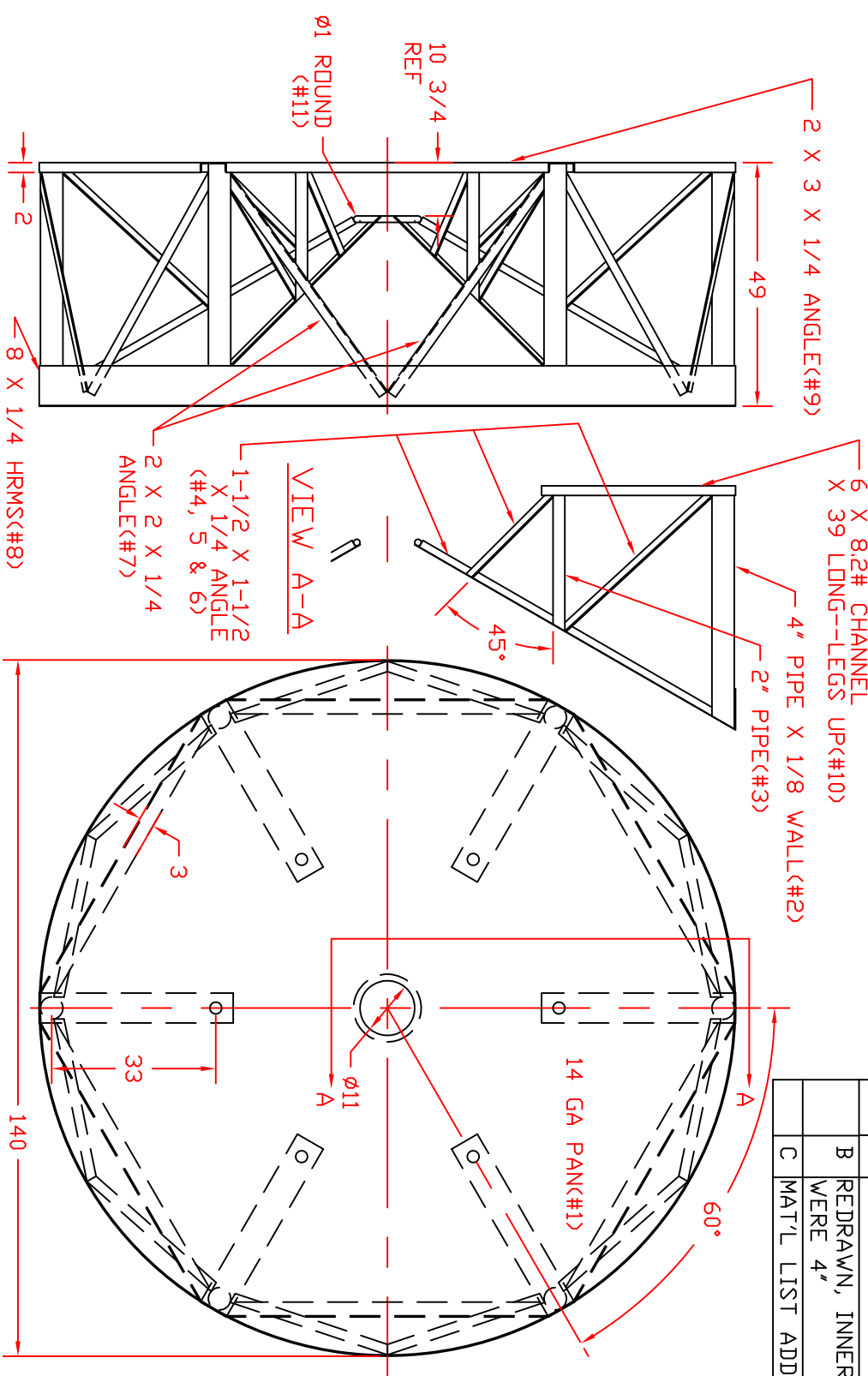


REVISIONS				
ZONE	REV	DESCRIPTION	DATE	APPROVED
	B	REDRAWN, INNER PIPES WERE 4"	19NDV96	
	C	MAT'L LIST ADDED	26JUN00	



ITEM #	QTY	DESCRIPTION
1	14	GA PANK
2	4	PIPE W/ 1/8 WALL
3	2	PIPE
4	6	1-1/2 X 1-1/2 X 1/4 ANGLE
5	6	1-1/2 X 1-1/2 X 1/4 ANGLE
6	6	1-1/2 X 1-1/2 X 1/4 ANGLE

ITEM #	QTY	DESCRIPTION
7	12	2 X 2 X 1/4 ANGLE
8	1	2 X 1/4 HRMS
9	2	2 X 3 X 1/4 ANGLE
10	6	6 X 8.2# CHANNEL X 30
11	1	1 DIA ROUND

**NORWESCO**  
ST. BONIFACIUS, MN

STEEL STAND, 7500/10000  
GAL CONE BOTTOM TANK

JTP 18NDV96

SCALE 1/24

DWG NO. 61860

SHEET