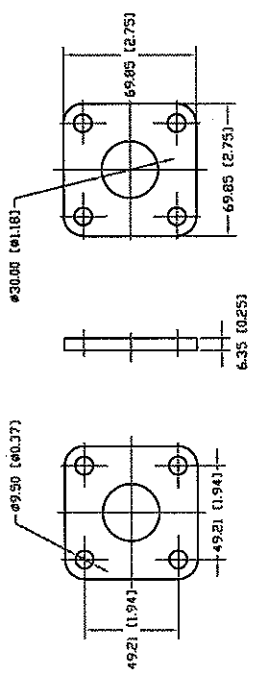
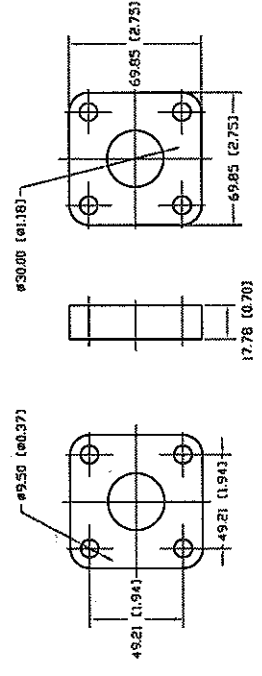
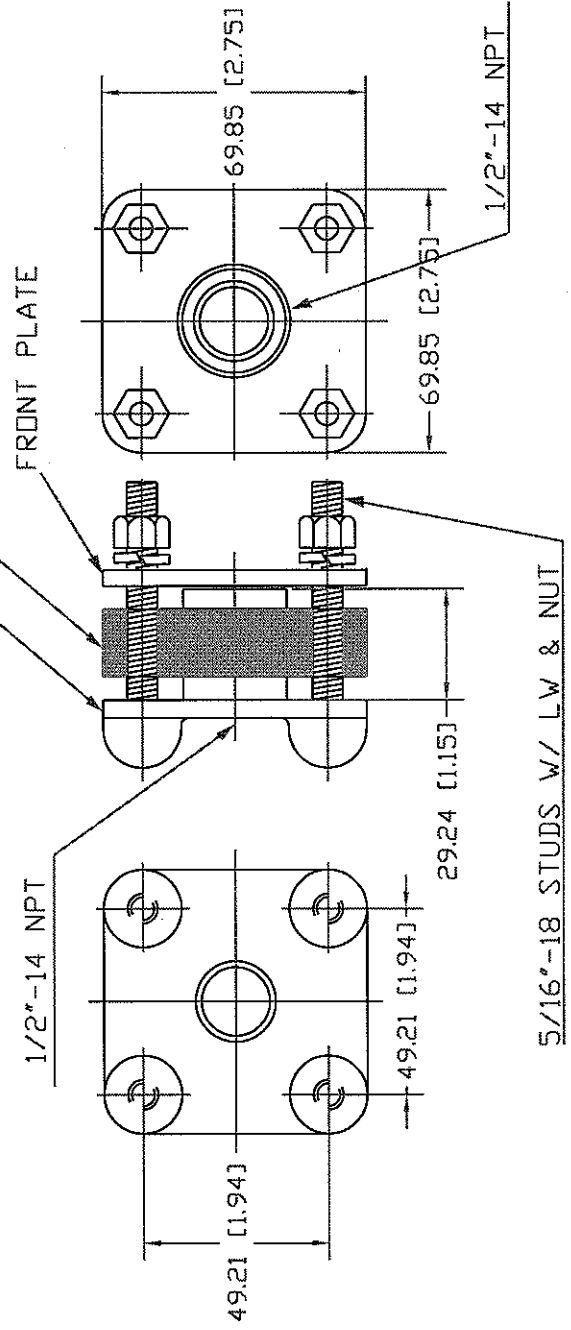


REVISIONS

ZONE	REV	DESCRIPTION	DATE	APPROVED



CAST BACK PLATE  
 ONE GASKET REQ'D TO COMPLETE FITTING



**NORWESCO**  
 ST. BONIFACIUS, MN

1/2" SS DBL THD BLTD FTG  
 ASSEMBLY

JTP 19MAY03

SIZE	FSCM NO.	DWG NO.	REV
A		63216	
SCALE 1/2		SHEET	